

## **MX.30xx - 12 bit transient recorder up to 100 MS/s**

- **PXI 3U / CompactPCI 3U format**
- **Fastest 12 bit PXI A/D converter board**
- **Up to 100 MS/s on one channel**
- **Up to 60 MS/s on two channels**
- **Simultaneously sampling on all channels**
- **6 input ranges:  $\pm 200$  mV up to  $\pm 10$  V**
- **Up to 64 MSample memory**
- **FIFO mode for slower sampling rates**
- **Window and pulsewidth trigger**
- **Input offset up to  $\pm 100\%$**
- **Synchronization possible**
- **Software SBench for Windows included**
- **Software SBench for Linux included**

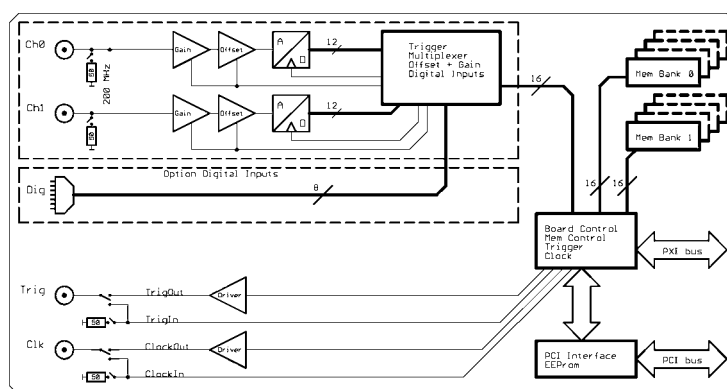


### **Product range overview**

All 16 boards of the MX.30xx series may use the on-board memory completely for the currently active number of channels.

Model	1 channel	2 channels
MX.3010	80 MS/s	
MX.3011	40 MS/s	40 MS/s
MX.3012	80 MS/s	40 MS/s
MX.3020	100 MS/s	
MX.3021	50 MS/s	50 MS/s
MX.3022	100 MS/s	50 MS/s
MX.3031	60 MS/s	60 MS/s

### **Hardware block diagram**



### **Software/Drivers**

A large number of drivers and examples are delivered with the board:

- Windows NT/2000 32 bit drivers
- Windows XP/Vista/7/8/10, 32 and 64 bit driver
- Linux 32bit and 64bit drivers
- SBench 6.x Base version for Windows and Linux
- Visual C++/Borland C++ Builder examples
- Borland Delphi examples
- Microsoft Visual Basic & Excel examples
- Python examples
- LabWindows/CVI examples
- LabVIEW - drivers and examples
- MATLAB - drivers and examples
- Other 3rd party drivers (e.g. VEE,DASYLab) are partly available upon request

### **Software programmable parameters**

sampling rate	1 kS/s to max sampling rate, external clock, ref clock, PXI clock
Input Range	$\pm 200$ mV, $\pm 500$ mV, $\pm 1$ V, $\pm 2$ V, $\pm 5$ V, $\pm 10$ V
Input impedance	50 Ohm / 1 MOhm
Input Offset	$\pm 100\%$ in steps of 1%
Clock mode	internal PLL, internal quartz, external, external divided, external reference clock, PXI reference clock
Clock impedance	50 Ohm / high impedance (> 4 kOhm)
Trigger impedance	50 Ohm / high impedance (> 4 kOhm)
Trigger mode	Channel, External, Software, Auto, Windows, Pulse, PXI Line[5..0], PXI Startrigger
Trigger level	1/256 to 255/256 of input range
Trigger edge	rising edge, falling edge or both edges
Trigger pulsewidth	1 to 255 samples in steps of 1 sample
Memory depth	32 up to installed memory in steps of 32
Posttrigger	32 up to 128 M in steps of 32
Multiple Recording segmentsize	32 up to installed memory / 2 in steps of 32

### **Application examples**

LDA/PDA  
Radar  
Ultrasound

Production test  
Spectroscopie  
Medical equipment

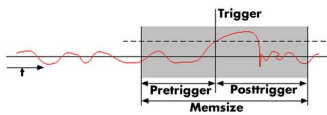
Laboratory equipment  
Test of mobile communication

## Possibilities and options

### Input impedance

All inputs could individually be switched by software between 50 Ohm and 1 MOhm input impedance. If using fast signals and high sampling rates or have 50 Ohm cable impedance the use of the 50 Ohm termination is recommended to minimise noise and signal reflections. If using weak signal sources or standard probes the use of the 1 MOhm termination is helpful.

### Ring buffer mode



The ring buffer mode is the standard mode of all oscilloscope instruments. Digitized data is continuously written into a ring memory until a

trigger event is detected. After the trigger, post-trigger samples are recorded and pre-trigger samples can also be stored. The number of pre-trigger samples available simply equals the total ring memory size minus the number of post trigger samples.

### FIFO mode

The FIFO mode is designed for continuous data transfer between measurement board and PC memory (up to 100 MB /s) or hard disk (up to 50 MB/s). The control of the data stream is done automatically by the driver on interrupt request.

### PXI bus

The PXI bus (PCI eXtension for instrumentation) offers a variety of additional normed possibilities for synchronising different components in one system. It is possible to connect several Spectrum cards with each other as well as to connect a Spectrum card with cards of other manufacturers.

### PXI reference clock

The card is able to use the 10 MHz reference clock that is supplied by the PXI system. Enabled by software the PXI reference clock is feeded in the on-board PLL. This feature allows the cards to run with a fixed phase relation.

### PXI trigger

The Spectrum cards support star trigger as well as the PXI trigger bus. using a simple software command one or more trigger lines can be used as trigger source. This feature allows the easy setup of OR connected triggers from different cards.

### Channel trigger

The data acquisition boards offer a wide variety of trigger modes. Besides the standard signal checking for level and edge as known from oscilloscopes it's also possible to define a window trigger. All trigger modes can be combined with the pulsewidth trigger. This makes it possible to trigger on signal errors like too long or too short pulses.

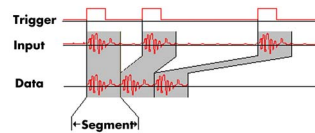
### External trigger I/O

All instruments can be triggered using an external TTL signal. It's possible to use positive or negative edge also in combination with a programmable pulse width. An internally recognised trigger event can - when activated by software - be routed to the trigger connector to start external instruments.

### Pulse width

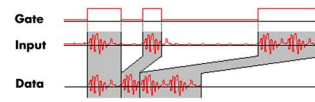
Defines the minimum or maximum width that a trigger pulse must have to generate a trigger event. Pulse width can be combined with channel trigger, pattern trigger and external trigger.

### Multiple Recording



The Multiple Recording mode allows the recording of several trigger events without restarting the hardware. With this option very fast repetition rates can be achieved. The on-board memory is divided in several segments of same size. Each of them is filled with data if a trigger event occurs.

### Gated Sampling

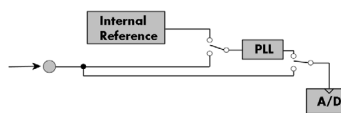


allows data recording controlled by an external gate signal. Data is only recorded if the gate signal has a programmed level.

### External clock I/O

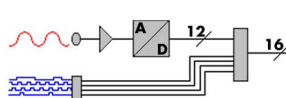
Using a dedicated connector a sampling clock can be fed in from an external system. It's also possible to output the internally used sampling clock to synchronise external equipment to this clock.

### Reference clock



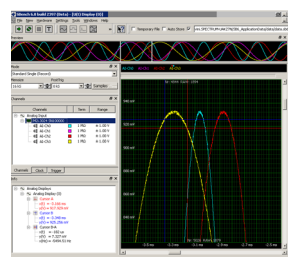
The option to use a precise external reference clock (typically 10 MHz) is necessary to synchronize the instrument for high-quality measurements with external equipment (like a signal source). It's also possible to enhance the stability of the sampling clock in this way. The driver automatically generates the requested sampling clock from the fed in reference clock.

### Digital inputs



This option acquires additional synchronous digital channels phase-stable with the analog data. When the option is installed there are 4 additional digital inputs for every analog A/D channel.

### SBench 6



A base license of SBench 6, the easy-to-use graphical operating software for Spectrum cards, is included in the delivery. The base license makes it possible to test the card, display acquired data and make some basic measurements. It's a valuable tool for checking the card's performance and assisting with the unit's initial setup. The cards also come with a demo license for the SBench 6 professional version. This license gives the user the opportunity to test the additional features of the professional version with their hardware. The professional version contains several advanced measurement functions, such as FFTs and X/Y display, import and export utilities as well as support for all acquisition modes including data streaming. Data streaming allows the cards to continuously acquire data and transfer it directly to the PC RAM or hard disk. SBench 6 has been optimized to handle data files of several GBytes. SBench 6 runs under Windows as well as Linux (KDE, GNOME and Unity) operating systems. A test version of SBench 6 can be downloaded directly over the internet and can run the professional version in a simulation mode without any hardware installed. Existing customers can also request a demo license for the professional version from Spectrum. More details on SBench 6 can be found in the SBench 6 data sheet.

## Technical Data

Resolution	12 bit	Input signal with 50 Ohm termination	max 5 V rms
Differential linearity error	≤ 1 LSB (ADC)	Input impedance	50 Ohm / 1 MOhm    25 pF
Integral linearity error	≤ 1 LSB (ADC)	Overvoltage protection (range ≤ ±1 V)	±5 V
Offset error	adjustable by user	Overvoltage protection (range > ±1 V)	±50 V
Gain error	< 1%	Digital Inputs input impedance	110 Ohm @ 2.5 V
Crosstalk 1 MHz signal, 50 Ohm term	< -70 dB	Digital Inputs delay to analog sample	-12 samples
Multi: Trigger to 1st sample delay	-10 to +20 samples (fix)	Dimension	160 mm x 100 mm (3U standard)
Multi: Recovery time	< 20 samples	Width (Standard)	1 slot
ext. Trigger accuracy	1 Samples	Width (with digital inputs)	2 slots
int. Trigger accuracy	1 Sample	Connector	3 mm SMB male
Trigger output delay		Warm up time	10 minutes
Ext. clock: delay to internal clock	42 ns ± 2 ns	Operating temperature	0°C to 50°C
Min internal clock	1 kS/s	Storage temperature	-10°C to 70°C
Min external clock	1 MS/s	Humidity	10% to 90%
Trigger input: Standard TTL level	Low: -0.5 V > level < 0.8 V High: 2.0 V > level < 5.5 V Trigger pulse must be valid ≥ 2 clock periods.	MTBF	100000 hours
Trigger output	Standard TTL, capable of driving 50 Ohm. Low < 0.4 V (@ 20 mA, max 64 mA) High > 2.4 V (@ -20 mA, max -48 mA) One positive edge after the first internal trigger	Power consumption 3.3 V @ full speed	max. 1.02 A (3.4 Watt)
		Power consumption 5 V @ full speed	max. 0.93 A (4.7 Watt)
		Clock input: Standard TTL level	Low: -0.5 V > level < 0.8 V High: 2.0 V > level < 5.5 V Rising edge. Duty cycle: 50% ± 5%
		Clock output	Standard TTL, capable of driving 50 Ohm Low < 0.4 V (@ 20 mA, max 64 mA) High > 2.4 V (@ -20 mA, max -48 mA)

	MX.3011	MX.3021	MX.3031	MX.3010 MX.3012	MX.3020 MX.3022
max internal clock	40 MS/s	50 MS/s	62.5 MS/s	80 MS/s	100 MS/s
max external clock	40 MS/s	50 MS/s	62.5 MS/s	80 MS/s	100 MS/s
-3 dB bandwidth	> 20 MHz	> 25 MHz	> 30 MHz	> 40 MHz	> 40 MHz
Zero noise level	< 1.5 LSB rms	< 1.5 LSB rms	< 1.75 LSB rms	< 2.0 LSB rms	< 2.0 LSB rms

## Dynamic Parameters

	MX.3011	MX.3021	MX.3031	MX.3010 MX.3012	MX.3020 MX.3022
Test - Samplerate	40 MS/s	50 MS/s	60 MS/s	80 MS/s	100 MS/s
Testsignal frequency	1 MHz	1 MHz	1 MHz	1 MHz	1 MHz
SNR (typ)	> 64.3 dB	> 64.3 dB	> 63.0 dB	> 64.3 dB	> 64.2 dB
THD (typ)	< -73.8 dB	< -73.8 dB	< -73.2 dB	< -73.8 dB	< -73.8 dB
SFDR (typ), incl harm.	> 77.5 dB	> 77.5 dB	> 74.3 dB	> 77.1 dB	> 76.8 dB
SINAD (typ)	> 63.8 dB	> 63.8 dB	> 62.6 dB	> 63.8 dB	> 63.7 dB
ENOB (based on SINAD)	> 10.3 LSB	> 10.3 LSB	> 10.1 LSB	> 10.3 LSB	> 10.3 LSB

Dynamic parameters are measured at ± 1 V input range (if no other range is stated) and 50 Ohm termination with the samplerate specified in the table. Measured parameters are averaged 20 times to get typical values. Test signal is a pure sine wave of the specified frequency with > 99% amplitude. SNR and RMS noise parameters may differ depending on the quality of the used PC. SNR = Signal to Noise Ratio, THD = Total Harmonic Distortion, SFDR = Spurious Free Dynamic Range, SINAD = Signal Noise and Distortion, ENOB = Effective Number of Bits. For a detailed description please see application note 002.

## Order Informations

The card is delivered with 32 MSample on-board memory and supports standard mode (Scope) and FIFO mode (streaming). Operating system drivers for Windows/Linux 32 bit and 64 bit, examples for C/C++, LabVIEW (Windows), MATLAB (Windows), LabWindows/CVI, Delphi, Visual Basic, Python and a Base license of the oscilloscope software SBench 6 are included. Drivers for other 3rd party products like VEE or DASyLab may be available on request.

**Adapter cables are not included. Please order separately!**

### Versions

Order no.	1 channel	2 channels
MX.3010	80 MS/s	
MX.3011	40 MS/s	40 MS/s
MX.3012	80 MS/s	40 MS/s
MX.3020	100 MS/s	
MX.3021	50 MS/s	50 MS/s
MX.3022	100 MS/s	50 MS/s
MX.3031	60 MS/s	60 MS/s

### Memory

Order no.	Option
MX.3xxx-64M	Memory upgrade to 64 MSample (128 MB) of total memory
MX.3xxx-up	Additional fee for later memory upgrade

### Options

Order no.	Option
MX.3xxx-dig	Additional synchronous digital inputs (4 per analog channel) including Cab-d40-idx-100

### Cables

for Connections	Length	Order no.				
		to BNC male	to BNC female	to SMA male	to SMA female	to SMB female
Analog/Clock/Trigger	80 cm	Cab-3f-9m-80	Cab-3f-9f-80	Cab-3f-3mA-80	Cab-3f-3fA-80	Cab-3f-3f-80
Analog/Clock/Trigger	200 cm	Cab-3f-9m-200	Cab-3f-9f-200	Cab-3f-3mA-200	Cab-3f-3fA-200	Cab-3f-3f-200
Probes (short)	5 cm		Cab-3f-9f-5			
		to 2x20 pole IDC	to 40 pole FX2			
Digital signals (option)	100 cm	Cab-d40-idx-100	Cab-d40-d40-100			

### Amplifiers

Order no.	Bandwidth	Connection	Input Impedance	Coupling	Amplification
SPA.1841 <sup>(2)</sup>	2 GHz	SMA	50 Ohm	AC	x100 (40 dB)
SPA.1801 <sup>(2)</sup>	2 GHz	SMA	50 Ohm	AC	x10 (20 dB)
SPA.1601 <sup>(2)</sup>	500 MHz	BNC	50 Ohm	DC	x10 (20 dB)
SPA.1412 <sup>(2)</sup>	200 MHz	BNC	1 MOhm	AC/DC	x10/x100 (20/40 dB)
SPA.1411 <sup>(2)</sup>	200 MHz	BNC	50 Ohm	AC/DC	x10/x100 (20/40 dB)
SPA.1232 <sup>(2)</sup>	10 MHz	BNC	1 MOhm	AC/DC	x100/x1000 (40/60 dB)
SPA.1231 <sup>(2)</sup>	10 MHz	BNC	50 Ohm	AC/DC	x100/x1000 (40/60 dB)
Information	External Amplifiers with one channel, BNC/SMA female connections on input and output, manually adjustable offset, manually switchable settings. An external power supply for 100 to 240 VAC is included. Please be sure to order an adapter cable matching the amplifier connector type and matching the connector type for your A/D card input.				

### Software SBench6

Order no.	
SBench6	Base version included in delivery. Supports standard mode for one card.
SBench6-Pro	Professional version for one card: FIFO mode, export/import, calculation functions
SBench6-Multi	Option multiple cards: Needs SBench6-Pro. Handles multiple synchronized cards in one system.
Volume Licenses	Please ask Spectrum for details.

<sup>(1)</sup> : Just one of the options can be installed on a card at a time.

<sup>(2)</sup> : Third party product with warranty differing from our export conditions. No volume rebate possible.

### Technical changes and printing errors possible

SBench, digitizerNETBOX and generatorNETBOX are registered trademarks of Spectrum Instrumentation GmbH. Microsoft, Visual C++, Visual Basic, Windows, Windows 98, Windows NT, Window 2000, Windows XP, Windows Vista, Windows 7, Windows 8 and Windows 10 are trademarks/registered trademarks of Microsoft Corporation. LabVIEW, DASyLab, Diadem and LabWindows/CVI are trademarks/registered trademarks of National Instruments Corporation. MATLAB is a trademark/registered trademark of The Mathworks, Inc. Delphi and C++Builder are trademarks/registered trademarks of Embarcadero Technologies, Inc. Keysight VEE, VEE Pro and VEE OneLab are trademarks/registered trademarks of Keysight Technologies, Inc. FlexPro is a registered trademark of Weisang GmbH & Co. KG. PCIe, PCI Express and PCI-X and PCI-SIG are trademarks of PCI-SIG. LXI is a registered trademark of the LXI Consortium. PICMG and CompactPCI are trademarks of the PCI Industrial Computer Manufacturers Group. Oracle and Java are registered trademarks of Oracle and/or its affiliates. Intel and Intel Xeon are trademarks or registered trademarks of Intel Corporation. AMD and Opteron are trademarks or registered trademarks of Advanced Micro Devices. NVIDIA, CUDA, GeForce, Quadro and Tesla are trademarks/registered trademarks of NVIDIA Corporation.